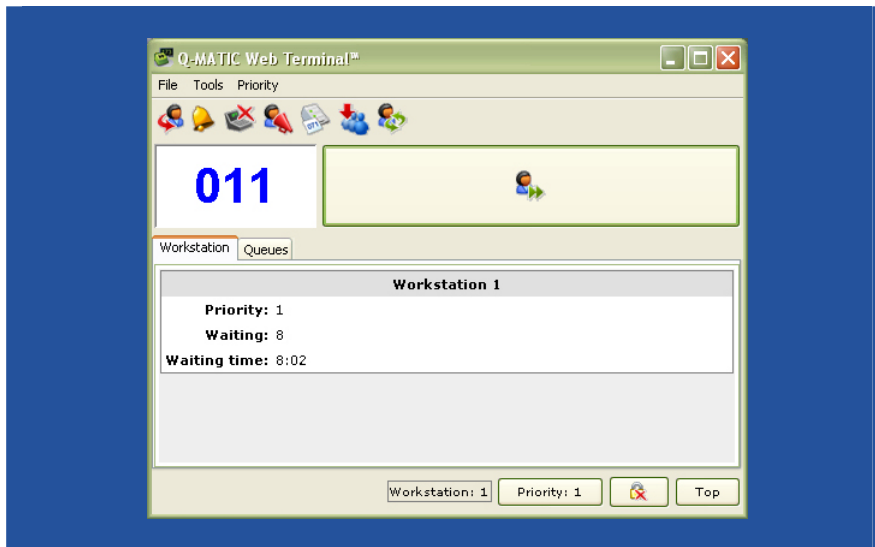


Q-MATIC Web Terminal™ 2.3



Managing customer flows from your PC has never been simpler. The Q-MATIC Web Terminal is Java based. The Java technology makes the terminal platform independent. The terminal is easily installed on the server; only a simple client installation is needed. Maintenance has never been simpler.

Features

- A new, optional, compact window.
- Less clutter on your desktop.
- Less cabling to worry about.
- Call the next customer.
- Recall a ticket.
- Recycle a ticket.
- Print tickets.
- Transfer a ticket between queues.
- Transfer the present customer to a specified queue.
- Remove a ticket number from a queue.
- Log on and log off.
- Display a queue overview.
- Display info about the current situation: priority, waiting tickets and waiting time.
- Change priority.
- A multi-terminal mode: several Workstations can be managed inside one and the same terminal window.

Q-MATIC Web Terminal™ 2.3

Article number

10110051 for Q-WIN 2000Q.

10110665 for Q-WIN S.

Used with

Q-WIN 55.01q SP9 or later.

Requirements

Operating system

— server Windows NT 4, 2000, 2003 or XP.

Operating system Windows 2000, XP, Linux or any OS with
— client Java support.

Java Java Run Time Environment not older
than 1.4 is required, but Java Run Time
Environment 1.5 is preferred.

Hard disk space

— server 64 MB or more.

Network TCP/IP.

Q-WIN options • Q-NET.
installed on • 1 Q-WIN user/terminal.
Q-WIN 2000Q • 1 Q-MATIC Web Terminal/terminal.

Q-WIN options installed on

Q-WIN S 1 Q-MATIC Web Terminal/terminal.

DS002.01G

